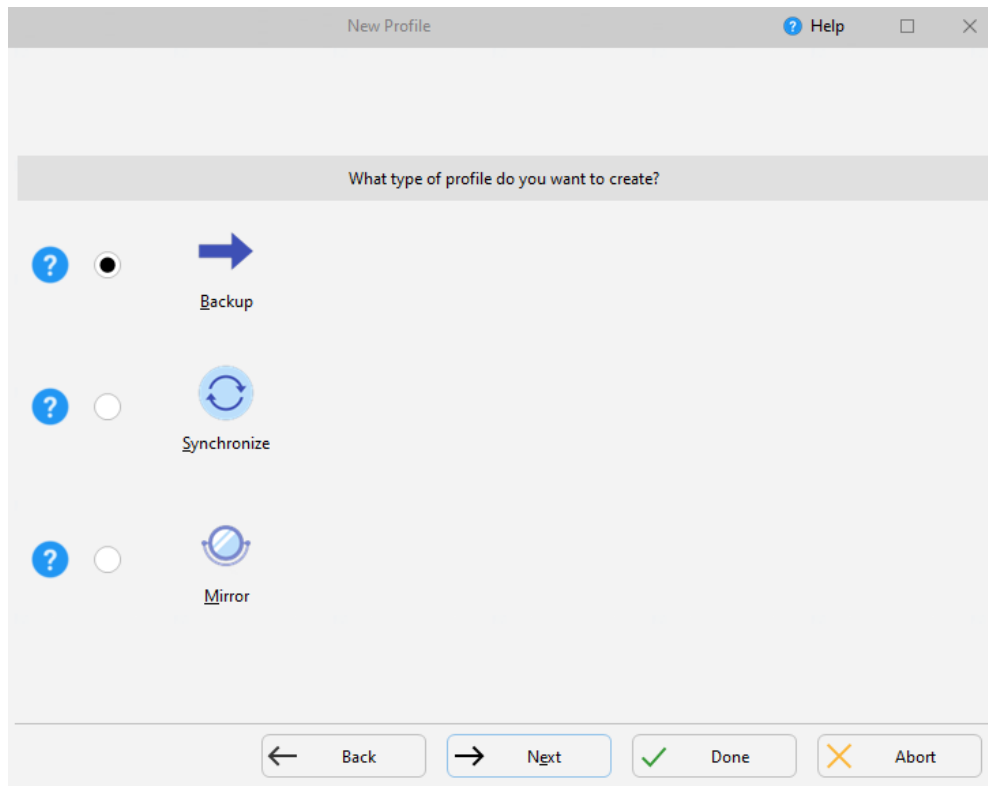
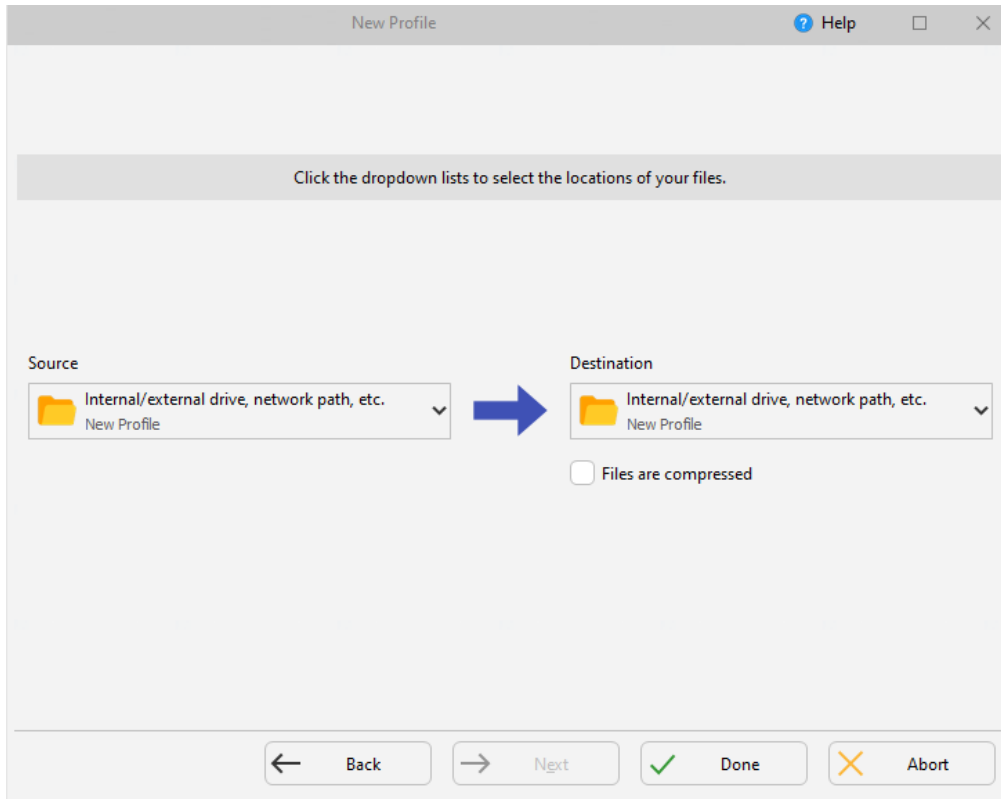


1. Press the “New” button on the lower-left to create a profile
2. On the next screen, type in a “Profile Name”. It is suggested that you use the folder or file you are transferring from and the place you are transferring to, like “Ephraim Picker Folder to E Drive”)

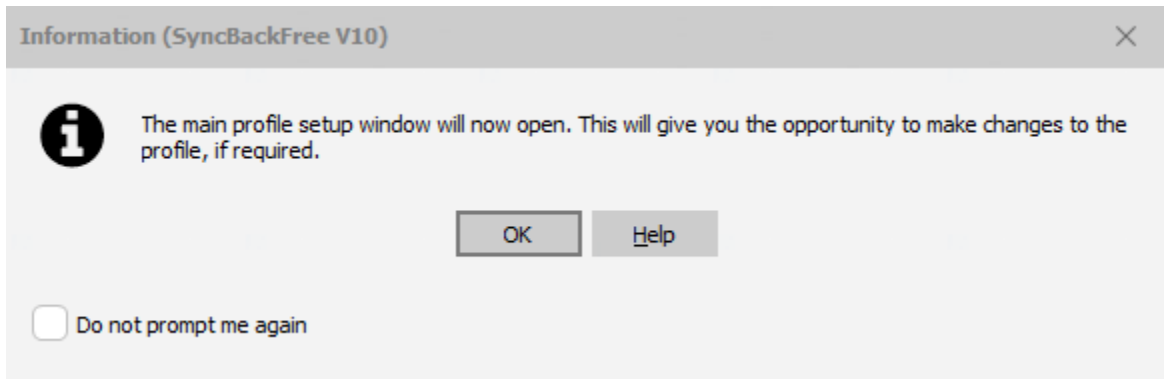
Then press “Next”.



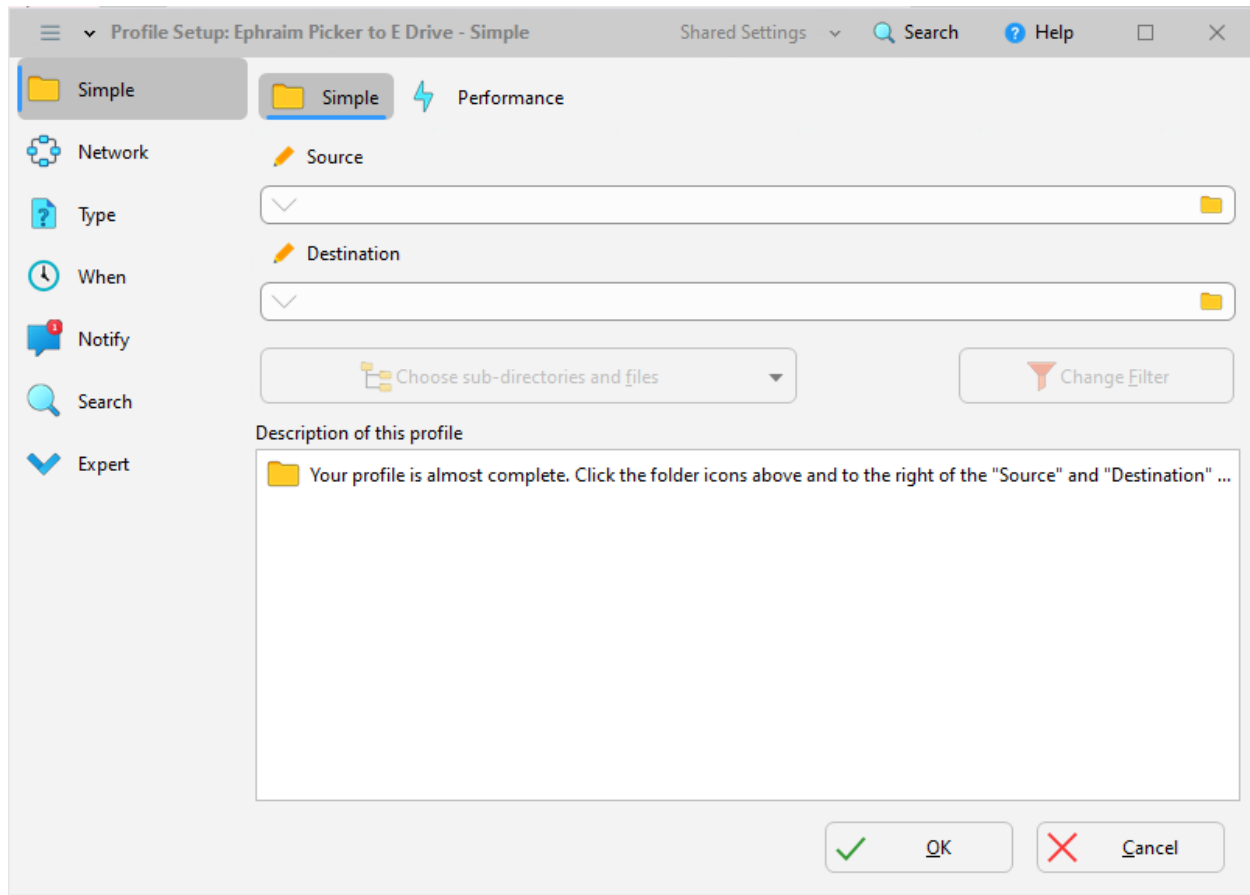
3. On the next screen, press “Next”.



4. On the next screen, press “Done”.

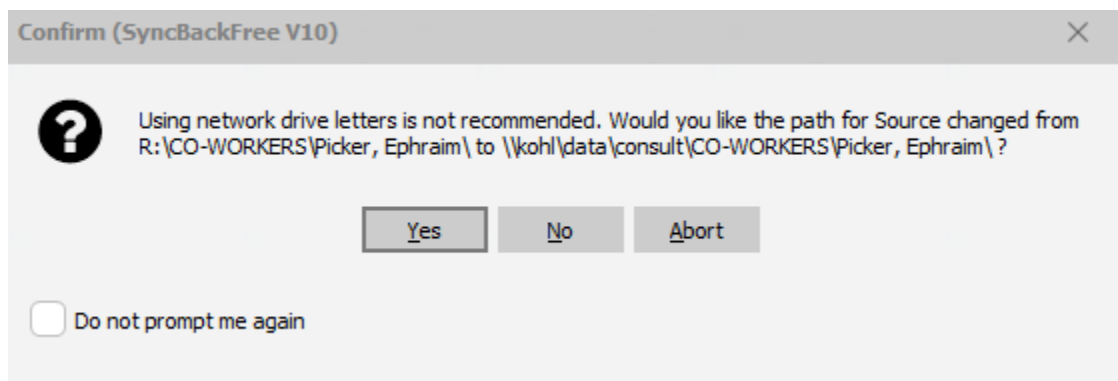


5. In the next window, press “OK”.

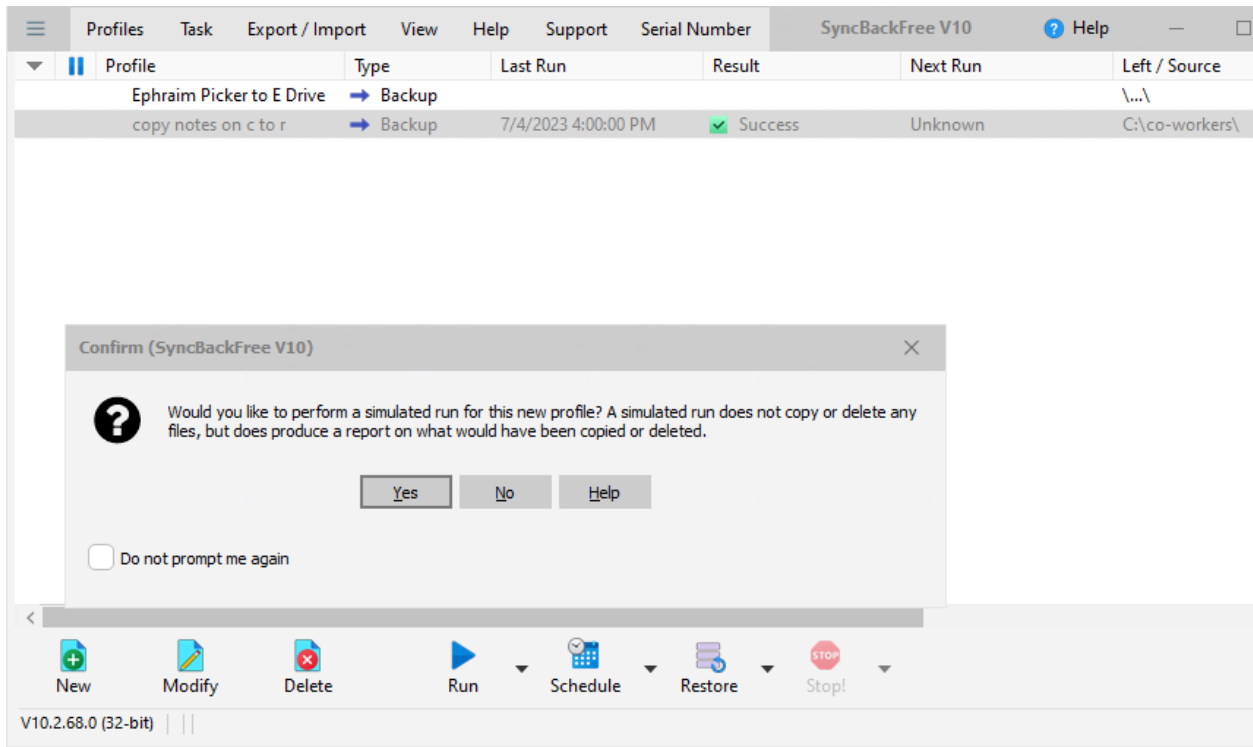


6. On the Profile Setup screen, press the folder icon on the right side of the text box under "Source". A small File Explorer will pop up so you can find the address of the file or folder you will be transferring.
7. Repeat for "Destination".

Then, press "OK".

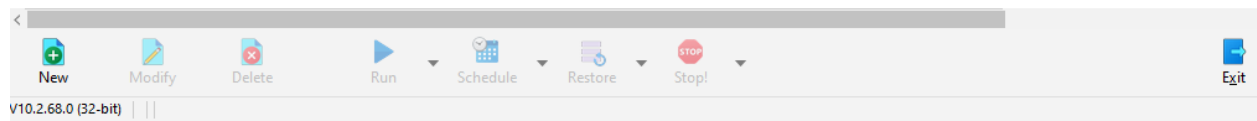


You may be asked not to use network drive letters and to change the path. Click "Yes".

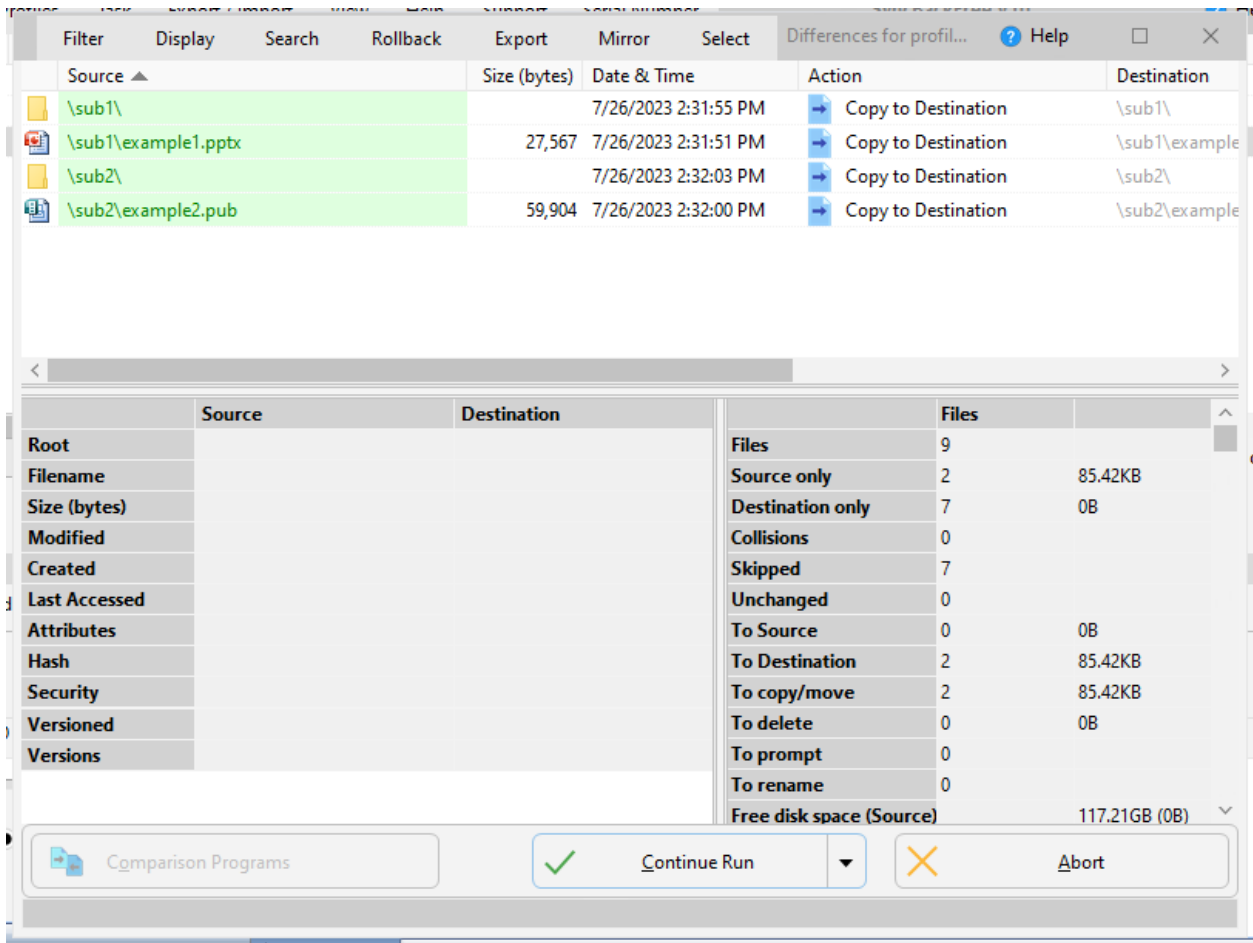


8. The first time you create a profile, you will get another popup window. Select “Yes”.
9. Scroll through the green list of source material to make sure you want to send over the files
10. Then, press “Continue Simulation”.

Profile	Type	Last Run	Result	Next Run	Left / Source	Right / Destina...	Backgrou..
Ephraim Picker to E Drive	Backup	7/26/2023 11:43:20 AM	Simulation Succes...		\\...\	E:\	
copy notes on c to r	Backup	7/4/2023 4:00:00 PM	Success	Unknown	C:\co-workers\	\\...\	



11. On the following screen, press the triangular “Run” button.



12. On the following screen, press “Continue Run”.